

# Food Hub Community of Practice Year 1 Report Back

June 20, 2024

June COP Meeting

Research Team

Sarah-Patricia Breen, Selkirk College

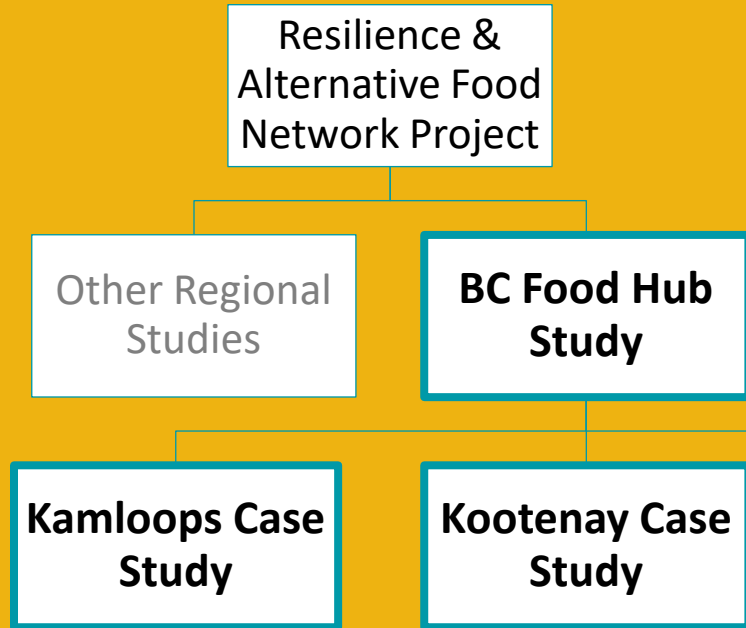
Lindsay Harris, UBCO & Kamloops Food Policy Council

Damon Chouinard, Central Kootenay Food Policy Council

Caitlin Quist, Selkirk College



# Project Overview



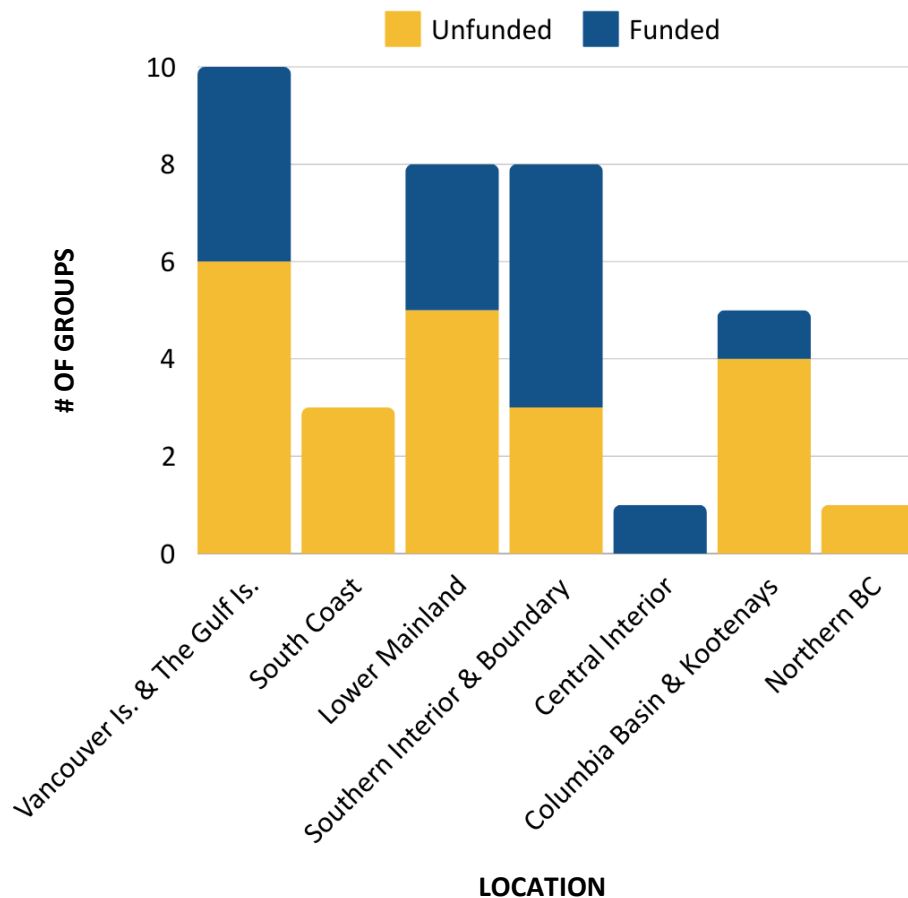
## Research Ethics Information

Fill out form if you do **NOT want** to participate



- What is a Food Hub?
- What roles do Food Hubs play?
- How is the COP evolving?

# COP Attendance by Geography



## COP Attendance Analysis

### Attendance reviewed by:

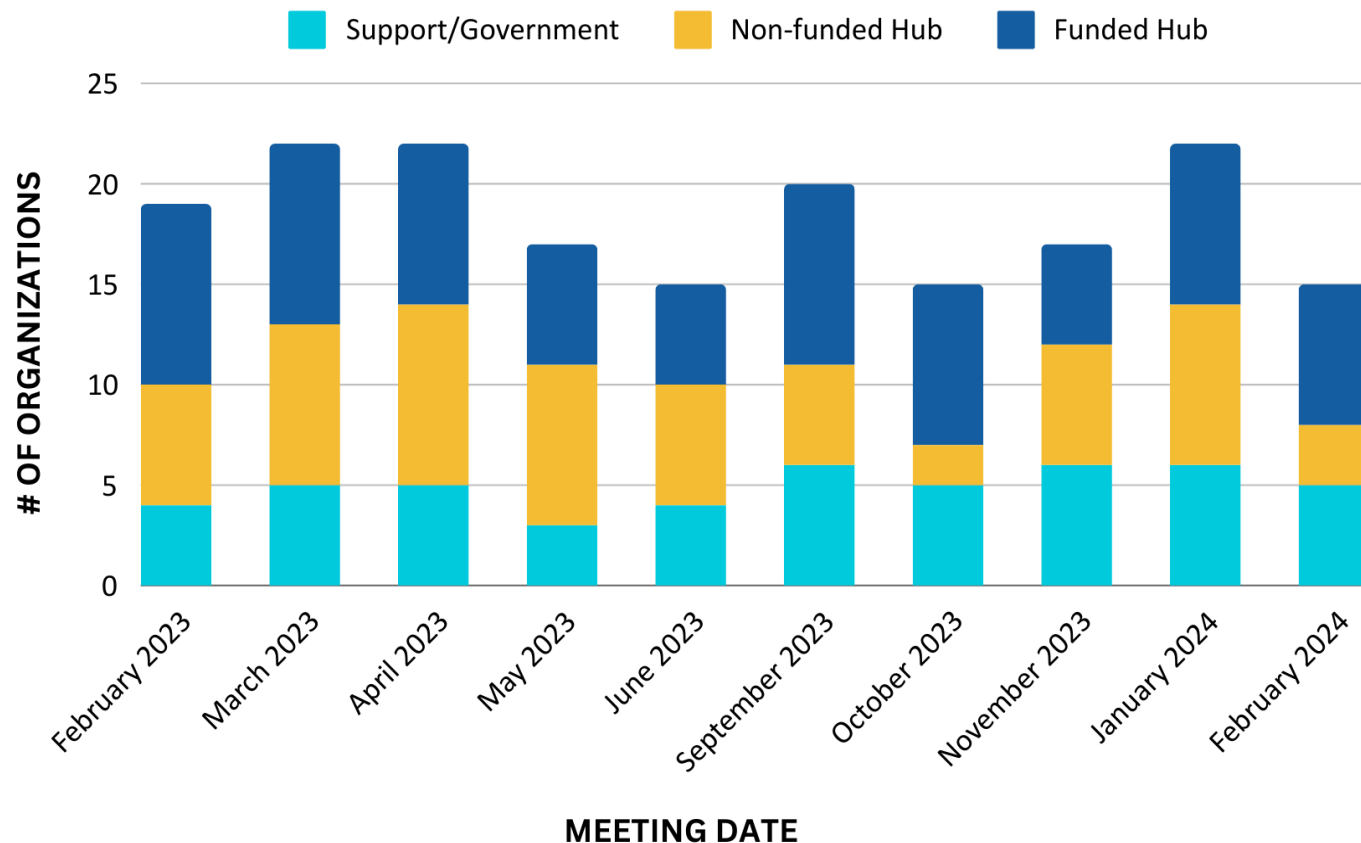
- Geography
- Funding
- Ratio of participant types

### Geography:

### Contrast between:

- North and South
- Population density
- Local Ag/food sector

# COP Attendance by Organization Type



## Funding:

- Gov funded vs unfunded

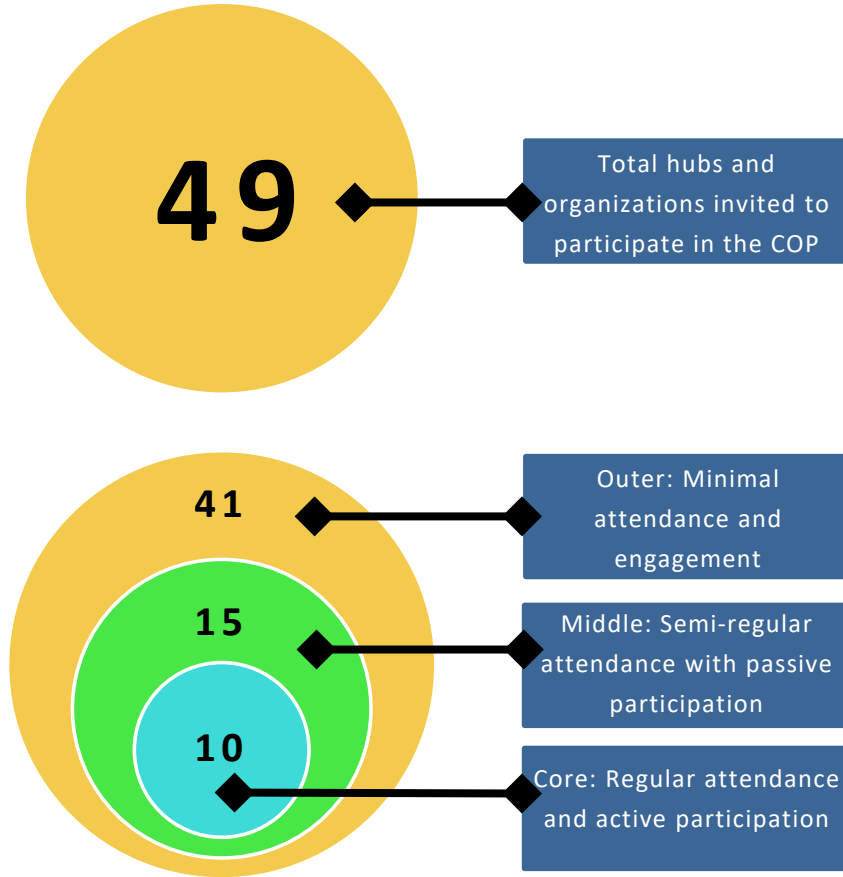
## Participant Ratios

- Actual hubs vs other groups
- Influences on conversation and topics
- Who is missing?

# Attendance Poll

- Does organizational capacity limit your ability to participate in the COP?
  - ☐ Yes
  - ☐ No
- Does your organization prioritize participation in the COP as part of your role?
  - ☐ Yes
  - ☐ No
- What influences your ability to participate in the COP?

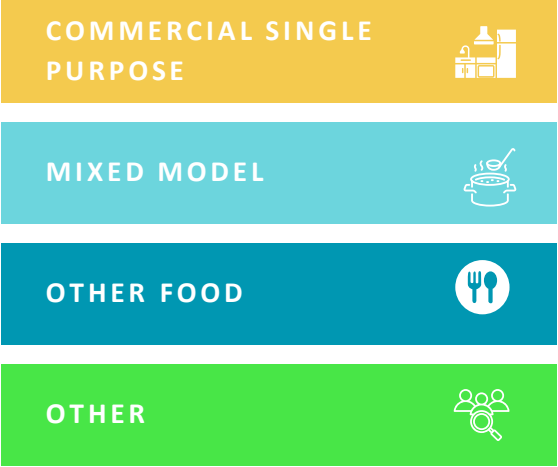
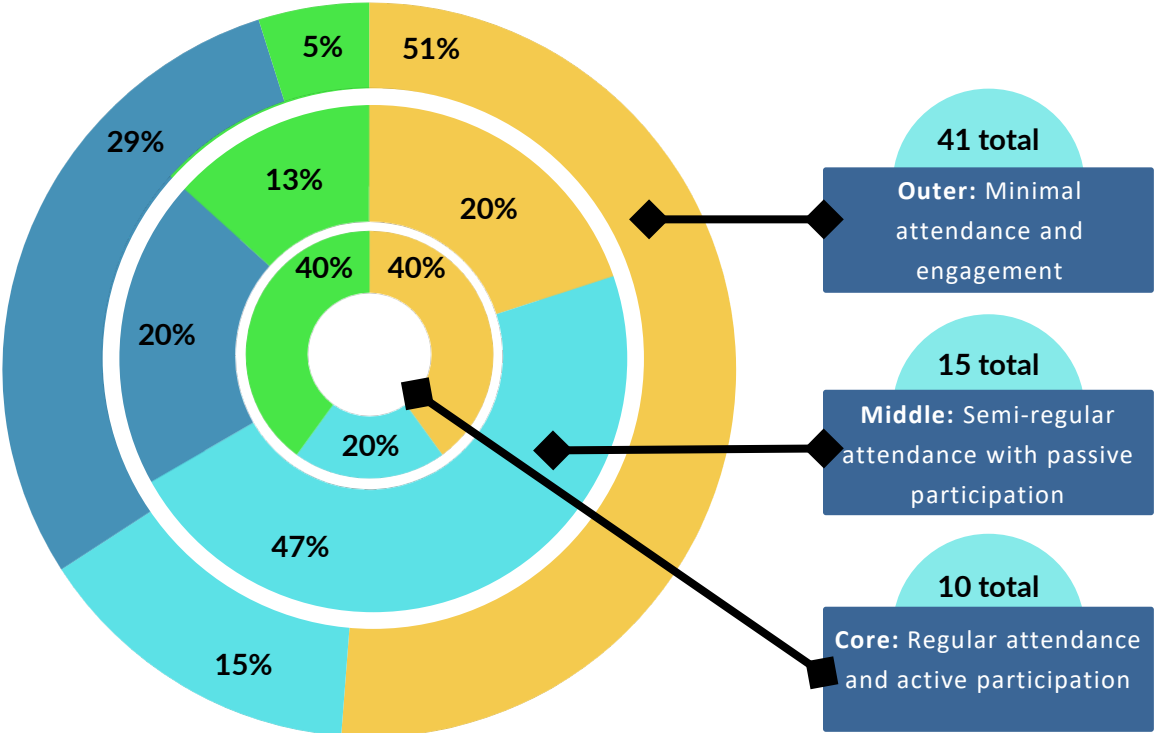
# COP Attendance and Engagement



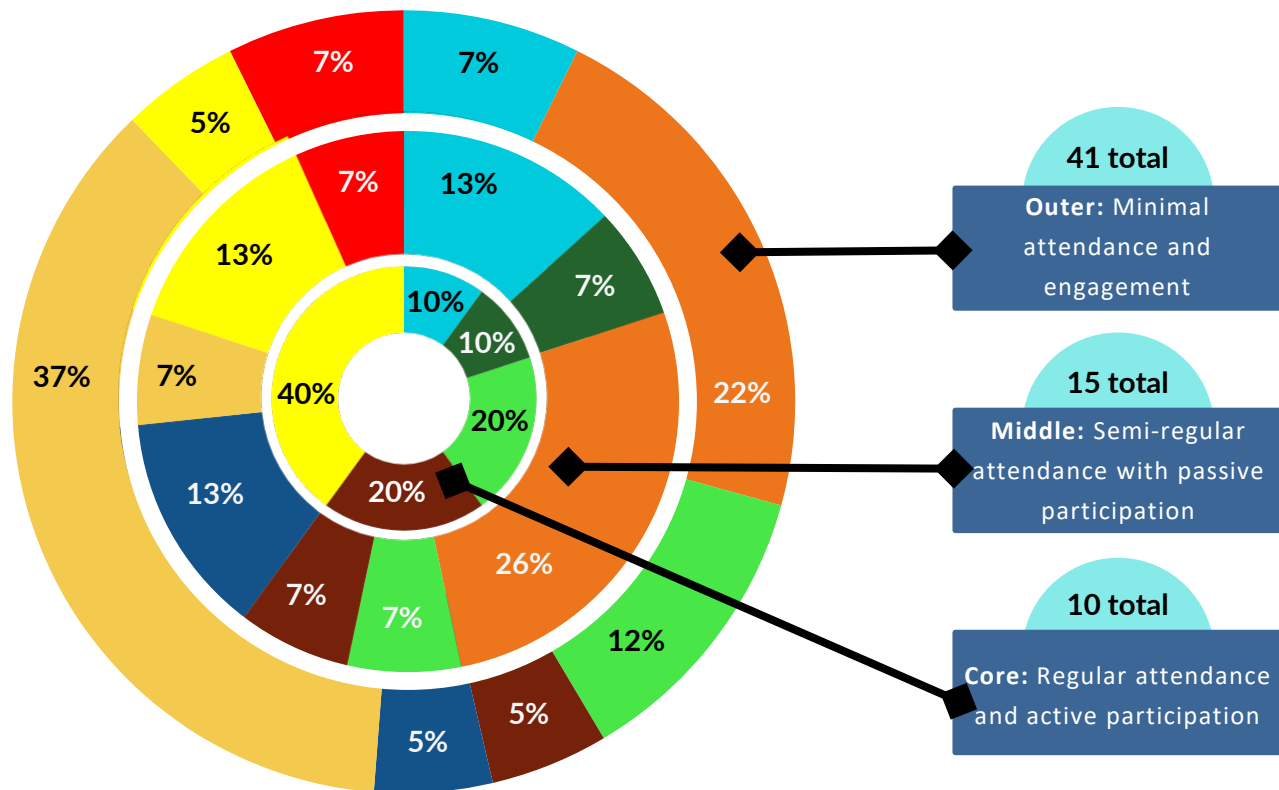
**COP YEAR  
ZERO - 2023**

**COP YEAR  
ONE - 2024**

# Organization Type Relative to Engagement



# Food Hub Development Stage Relative to Engagement

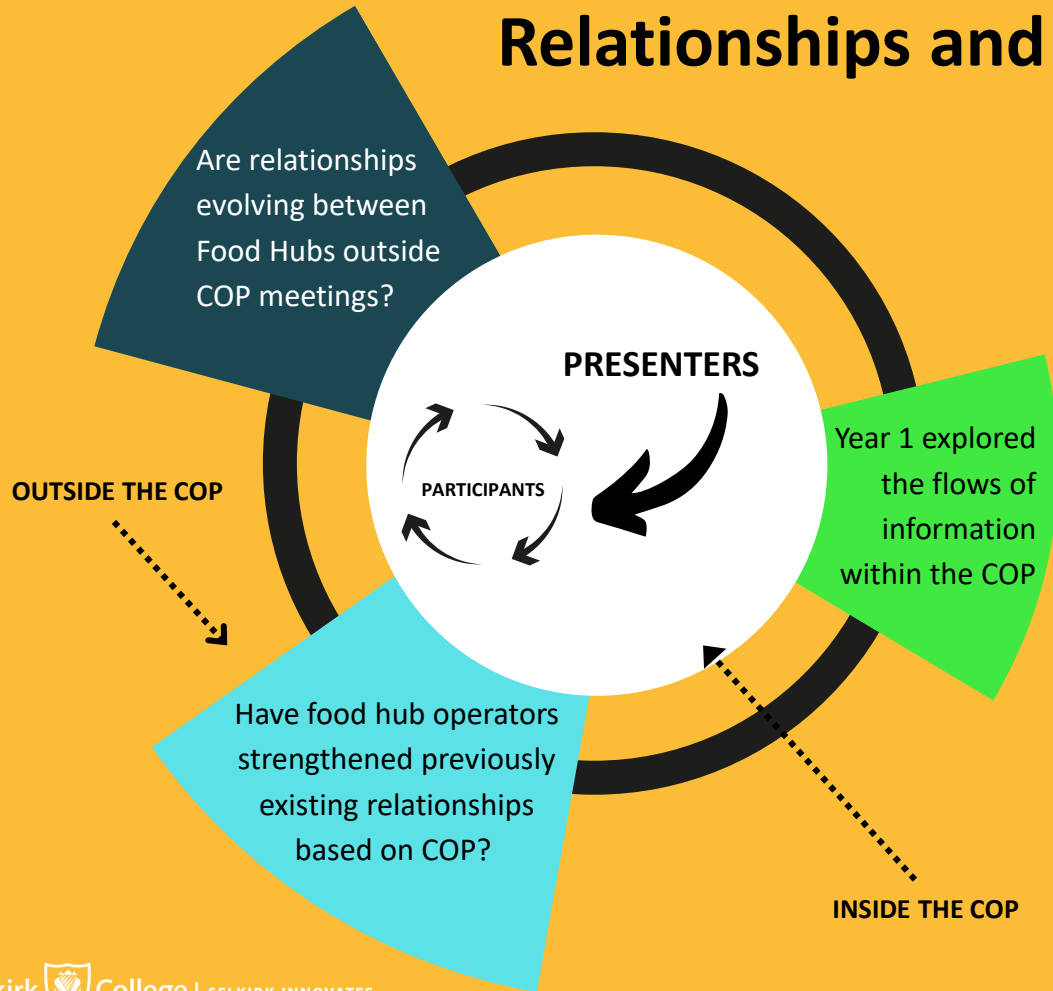




# Engagement Poll

- Thinking about your participation in the COP, do you identify as:
  - ☐ Core: Regular attendance and active participation
  - ☐ Middle: Semi-regular attendance with passive participation
  - ☐ Outer: Minimal attendance and engagement
- To what extent has the food hub CoP contributed to increases in your skill and knowledge in the following areas?  
(To a Great Extent, Somewhat, Very Little, Not at All)
  - ☐ Financial sustainability
  - ☐ Working within the food system
  - ☐ Shared kitchen operations
- Do you have any comments about how the CoP contributed or did not contribute to increases in skill and knowledge related to operating food hubs?

# Relationships and How Information Flows



In Year One, we observed the types of interactions that occur **inside the COP**.

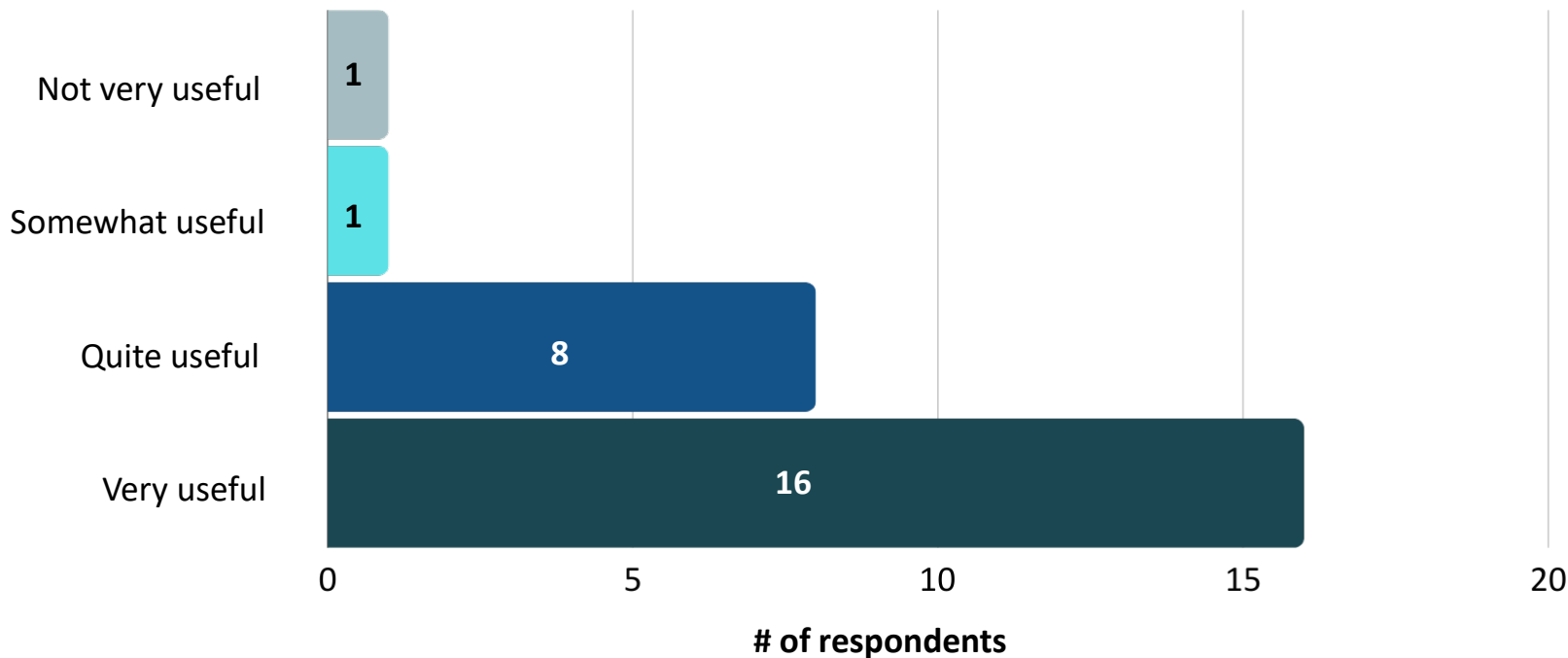
In Year Two, we want to include the types of interactions that occur **outside of the COP**.

# Relationships Poll

- What actions you have taken outside the COP in the past year (select all that apply):
  - ☐ Connected with another COP member via phone
  - ☐ Connected with another COP member via email
  - ☐ Collaborated with another COP member on a funding proposal
  - ☐ Collaborated with another COP member on a project
  - ☐ Took a collaborative approach to working on a regional food system issue
  - ☐ Implemented an idea you heard about at a COP meeting
  - ☐ Visited another Food Hub
  - ☐ Used resources that another COP member sent to you
  - ☐ Shared resources with another COP member
  - ☐ Made a referral to another COP member
  - ☐ Shared or sold equipment with another COP member
  - ☐ Followed up with a guest speaker
  - ☐ Accessed COP resources (e.g., recordings)
- How have your relationships with other COP members evolved over the past year?

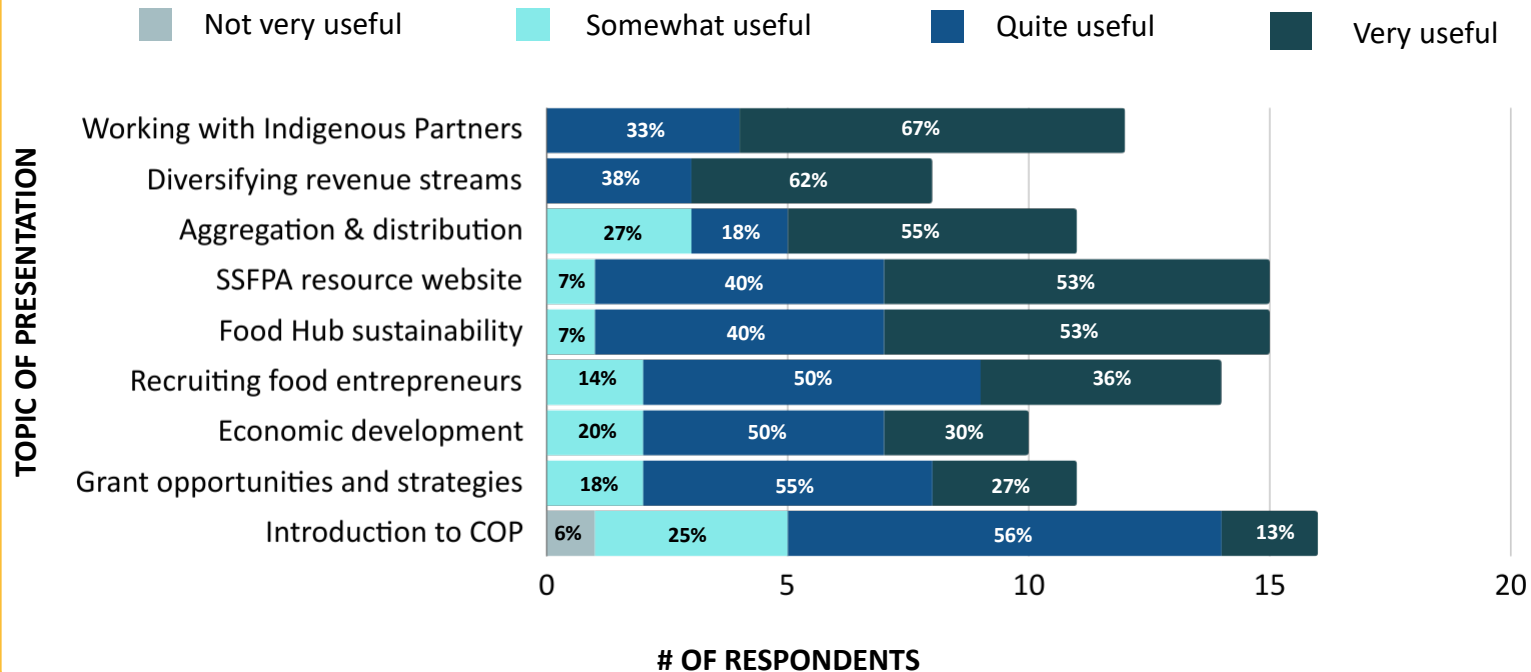
# Member ratings of overall usefulness of COP meetings

How useful do you find the Community of Practice Overall, in relation to where you are at in developing or running your food hub?



# Member ratings of topic usefulness of COP meetings

How useful was today's meeting, in relation to where you are at in developing or running your food hub?



# Emerging Themes & Tensions

- Influences on Participation
  - Organizational values
  - Organizational capacity
- Geographic (in)Equity
  - Missing Northern British Columbia
- Current COP Direction
  - Vertical structure with collaborative space
- What is a Food Hub?
  - Broad range of organizations
  - Evolving based on place and sub-sector
- Tensions
  - Internal: values versus financial and human capacity
  - External: funding priorities versus community needs

# Topics Poll

- Which of the following topics are of interest for future COP meetings?
  - ☐ Financial sustainability / funding
  - ☐ Supporting sub-sectors that are less frequently represented in food hubs (e.g. meat, seafood)
  - ☐ Training on presenting to local governments
  - ☐ Creating economies of scale through collaboration
  - ☐ Communicating your value proposition
  - ☐ Mapping distribution and supply chain data
  - ☐ Role of food hubs in disaster response
  - ☐ Kitchen design
  - ☐ Developing relationships with Indigenous communities
  - ☐ Other: \_\_\_\_\_
- Do you have any comments about how the topics discussed at the COP meetings align with your areas of priority or interest? (open ended)

# Looking Forward

- Do you have any comments about how the COP could better serve your needs in the next year?



# Discussion Q&A



Social Sciences and Humanities  
Research Council of Canada

Conseil de recherches en  
sciences humaines du Canada

Canada

**Thank you!**  
**For more information visit**



Contact Details:

Sarah - [sbreen@selkirk.ca](mailto:sbreen@selkirk.ca)

Lindsay - [lindsay@tapestryevaluation.com](mailto:lindsay@tapestryevaluation.com)

Damon - [ed@ckfoodpolicy.ca](mailto:ed@ckfoodpolicy.ca)

