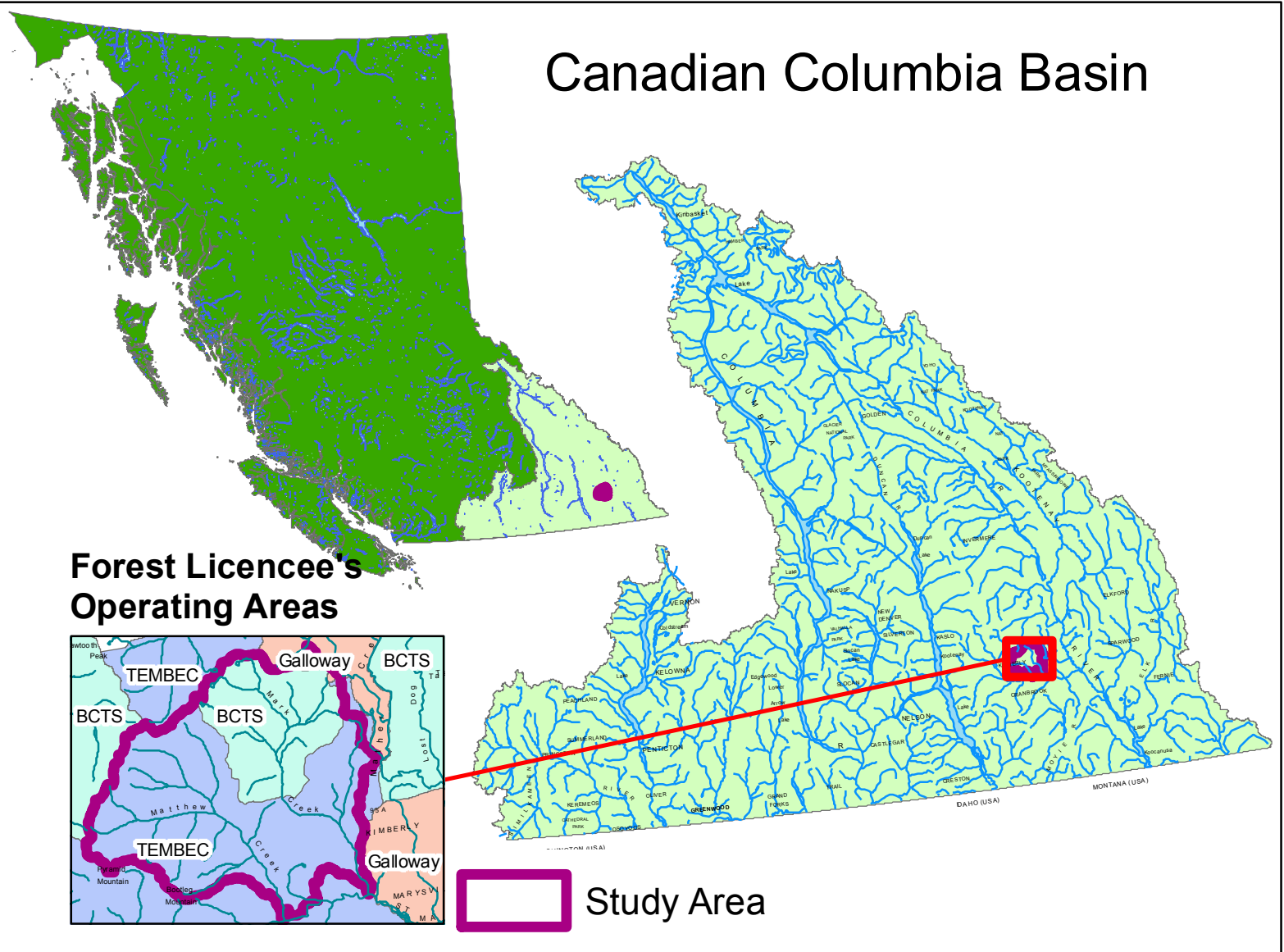
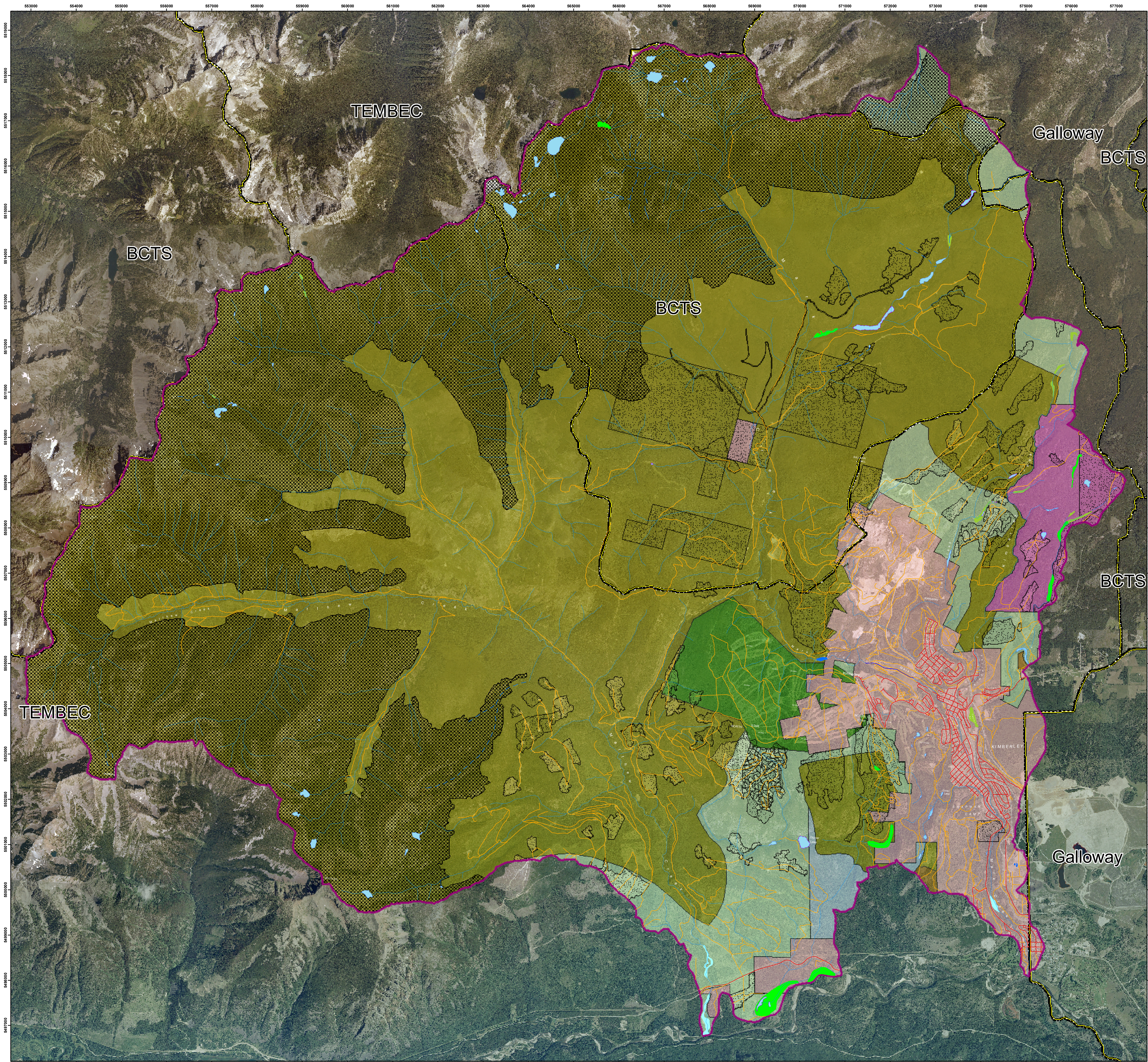


# Operability and Ownership Related to Forestry Development Activity in Mark Creek and Matthew Creek Watersheds



This study area comprises of Mark Creek, Matthew Creek and other adjacent watersheds. The purpose of this map is to illustrate ownership, operable lands and tenured cutblocks related to forestry licensee's development in the study area.

Although 78.3% of the study area is classified as long term crown miscellaneous reserve, there is still considerable forestry development activity occurring in operable lands. Due to recent changes in the forest practices code, frequent changes occur to current data that displays specific forest tenure activities such as proposed roads and blocks. The forest tenure cutblocks displayed were extracted from FTEN layers registered in ILMB's Land Resource Data Warehouse and more current and complete tenure data can be found on BC Ministry of Forests and Range MapView application. For the most accurate and up to date information, it would have to be acquired from the licensee's directly. Due to the sensitivity to the licensee's operations, this could prove difficult to access.

The major forest licencees in the study area consist of Tembec and BC Timber Sales. It is critical that communication of forest development plans is occurring and a solid working relationship is required to coordinate watershed management activities appropriately.

Ownership in Study Area	
Class	Percentage
Private	8.8
UREP - Long Term	0.6
Crown Forest Management Unit - Long Term	8.2
Timber Agreement Land	0.1
Crown Misc. Reserves - Long Term	78.3
Crown Misc. Reserves	2.0
Misc. Leases	1.9

## Ownership Class

- Private
- UREP - Long Term
- Crown Forest Management Unit - Long Term
- Timber Agreement Land
- Crown Misc. Reserves - Long Term
- Crown Misc. Reserves
- Misc. Leases
- Licensee Operating Area Divisions
- Inoperable Areas
- Forest Tenure Cutblocks
- Road (Gravel, Unimproved, Overgrown)
- Road (Paved, Undivided or Divided)
- Bridge
- Rail Line
- Trail
- Canal
- River or Stream - Definite
- River or Stream - Indefinite
- Lake - Intermittent
- Dam
- Marsh
- Swamp
- Lake - Definite
- Reservoir - Definite
- River or Stream - Definite

## Data Sources

Forestry Data: Ministry of Forests and Range, Cranbrook  
BC Ministry of Agriculture and Lands  
Integrated Land Management Bureau  
TRIM Data: BC Ministry of Agriculture and Lands  
Integrated Land Management Bureau  
Orthophoto: BC Ministry of Agriculture and Lands  
(Circa 2005)

Datum: NAD 83  
Projection: UTM Zone 11 N  
Date: May 15, 2008  
Produced by: Selkirk Geospatial Research Centre (Chris Gray)

