

State of Climate Adaptation

TOWN OF GOLDEN

APPENDIX OF CLIMATE DATA

FEBRUARY 2020



Table of Contents

| | |
|--|---|
| Figure A-1: Historical and projected average annual temperature | 2 |
| Figure A-2: Historical and projected average spring temperature | 2 |
| Figure A-3: Historical and projected average summer temperature | 3 |
| Figure A-4: Historical and projected average fall temperature | 3 |
| Figure A-5: Historical and projected average winter temperature | 3 |
| Figure A-6: Historical and projected annual number of days over 30 °C | 4 |
| Figure A-7: Historical and projected number of summer days over 30° C | 4 |
| Figure A-8: Historical and projected annual number of days with maximum temperature over 90 th percentile in the 1961-1990 period | 4 |
| Figure A-9: Historical and projected number of summer days with maximum temperature over 90 th percentile in the 1961-1990 period | 5 |
| Figure A-10: Historical and projected annual number of daily freeze-thaw cycles..... | 5 |
| Figure A-11: Historical and projected number of daily freeze-thaw cycles in winter | 5 |
| Figure A-12: Historical and projected growing season length..... | 6 |
| Figure A-13: Historical and projected growing degree days | 6 |
| Figure A-14: Historical and projected total annual precipitation..... | 6 |
| Figure A-15: Historical and projected total spring precipitation | 7 |
| Figure A-16: Historical and projected total summer precipitation | 7 |
| Figure A-17: Historical and projected total fall precipitation | 7 |
| Figure A-18: Historical and projected total winter precipitation | 8 |
| Figure A-19: Historical and projected maximum 1-day precipitation | 8 |
| Figure A-20: Historical and projected maximum dry spell length..... | 8 |
| Figure A-21: Historical and projected annual precipitation above the 95 th percentile in the 1961-1990 period | 9 |
| Figure A-22: Historical and projected number of days of precipitation above the 95 th percentile in the 1961-1990 period | 9 |

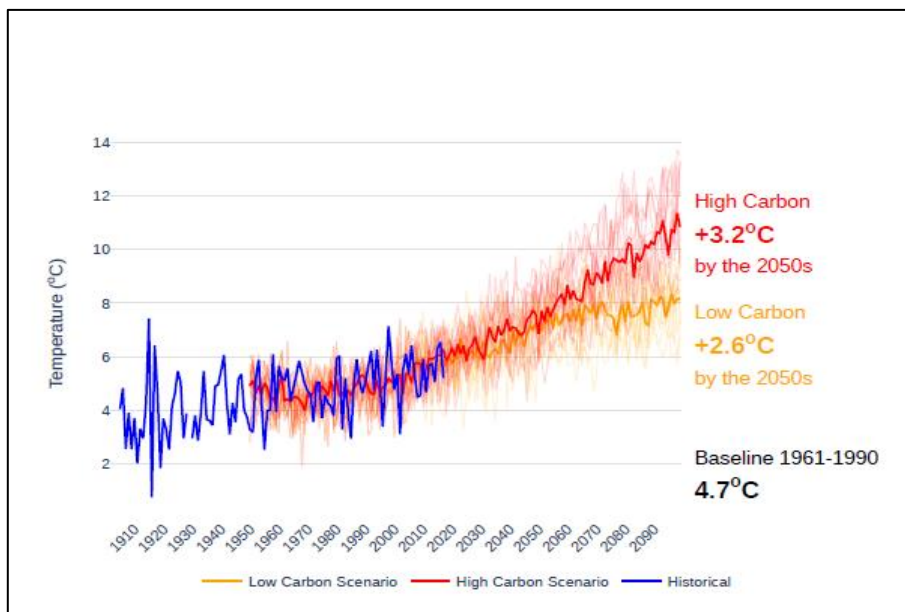


Figure A-1: Historical and projected average annual temperature

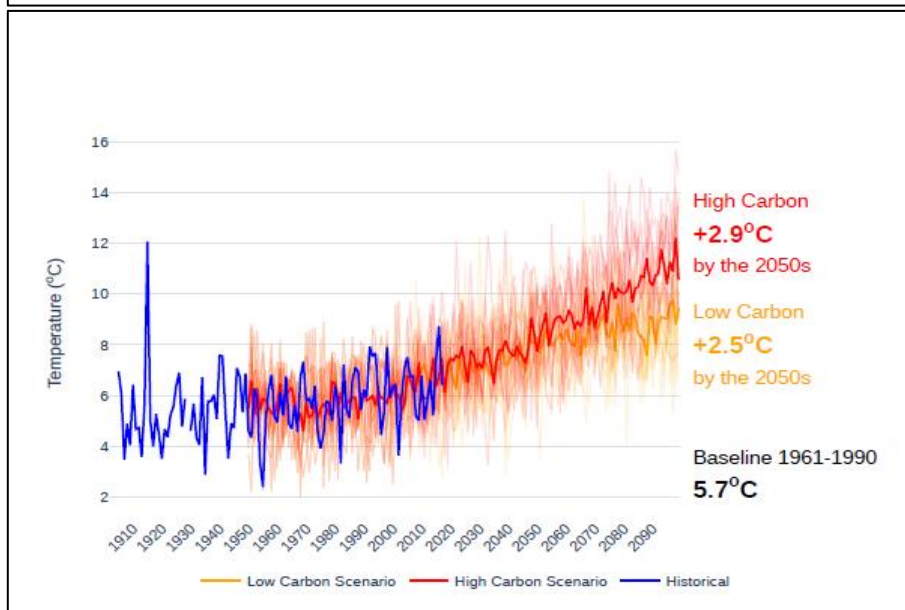


Figure A-2: Historical and projected average spring temperature

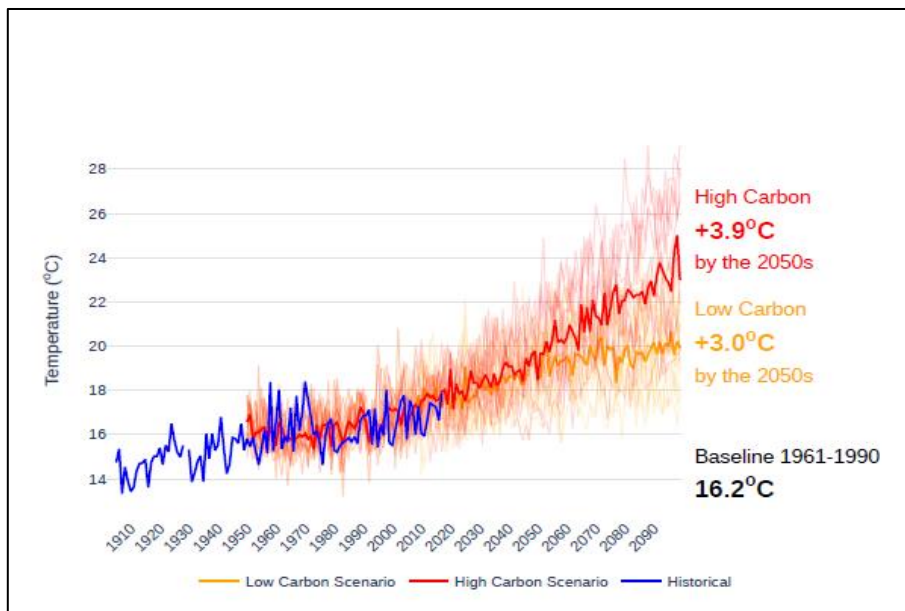


Figure A-3: Historical and projected average summer temperature

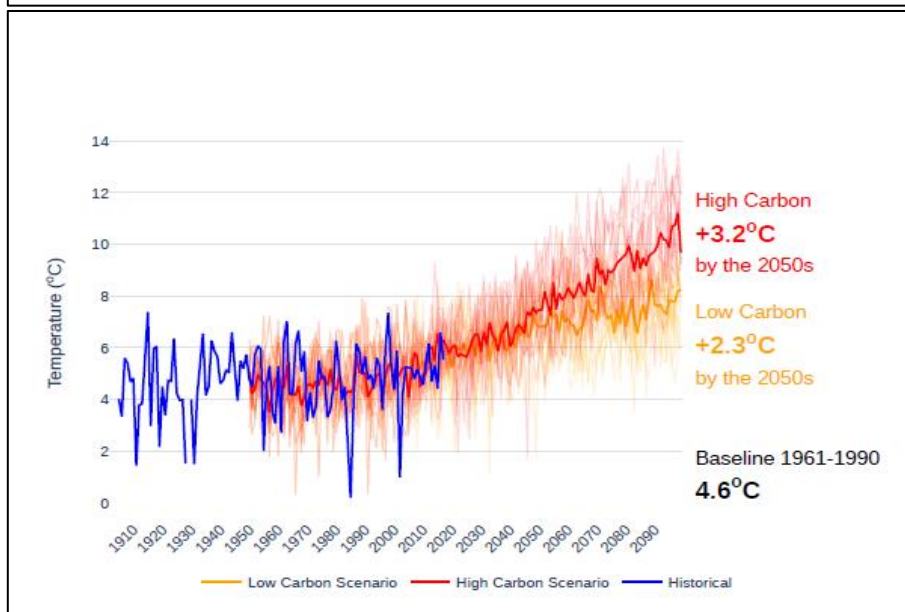


Figure A-4: Historical and projected average fall temperature

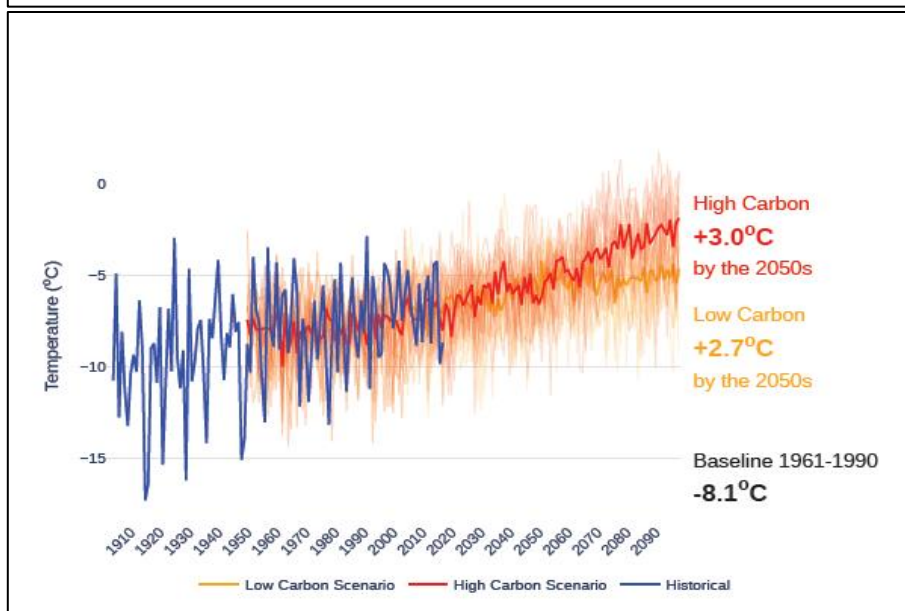


Figure A-5: Historical and projected average winter temperature

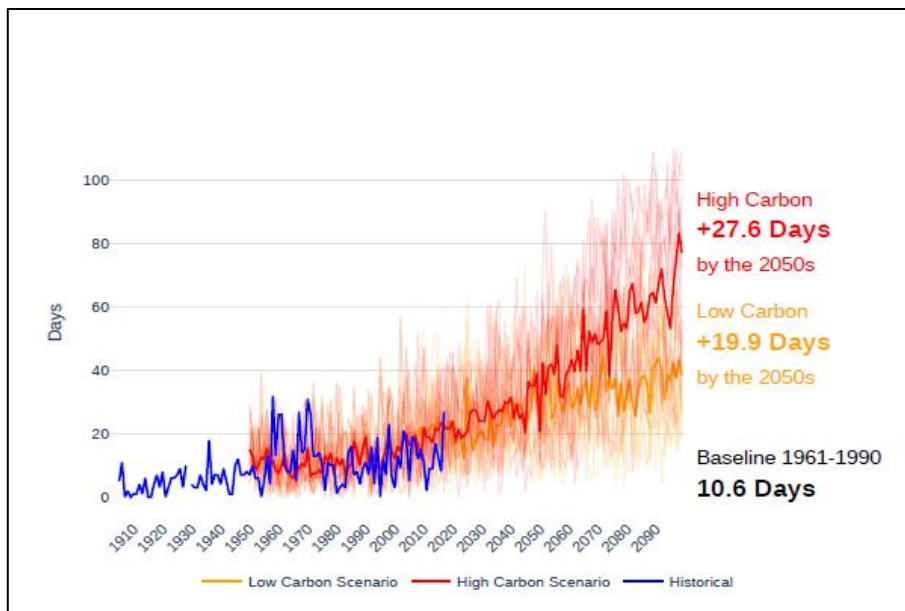


Figure A-6: Historical and projected annual number of days over 30 °C

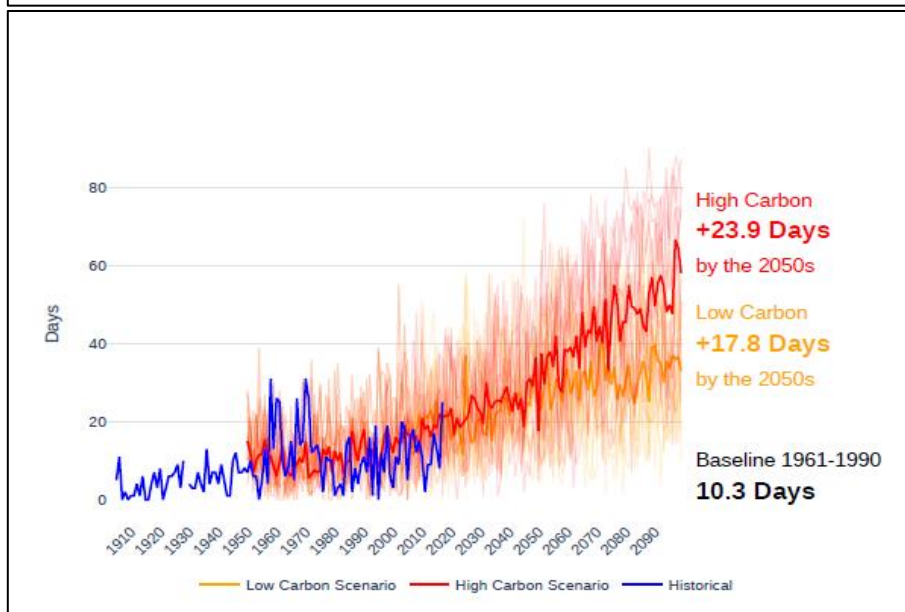


Figure A-7: Historical and projected number of summer days over 30 °C

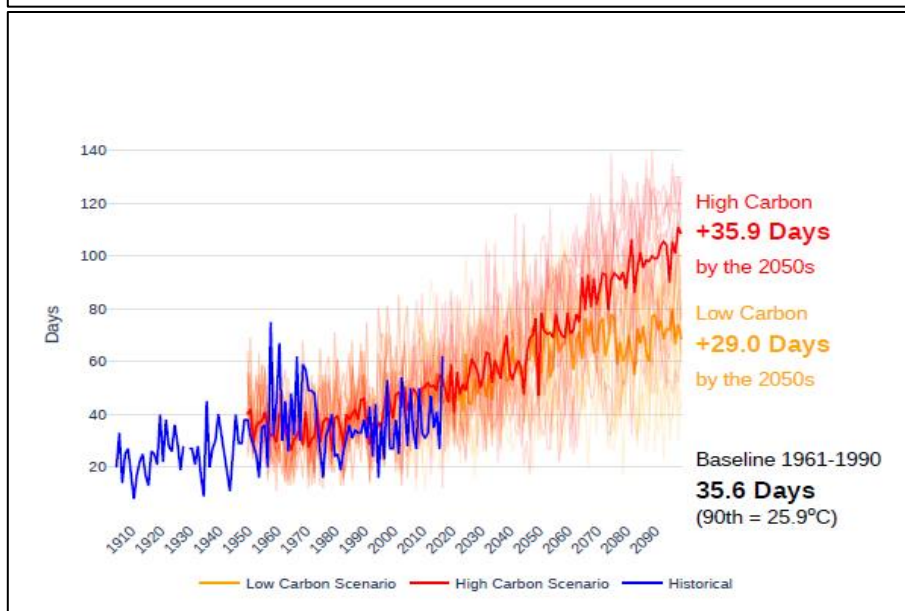


Figure A-8: Historical and projected annual number of days with maximum temperature over 90th percentile in the 1961-1990 period

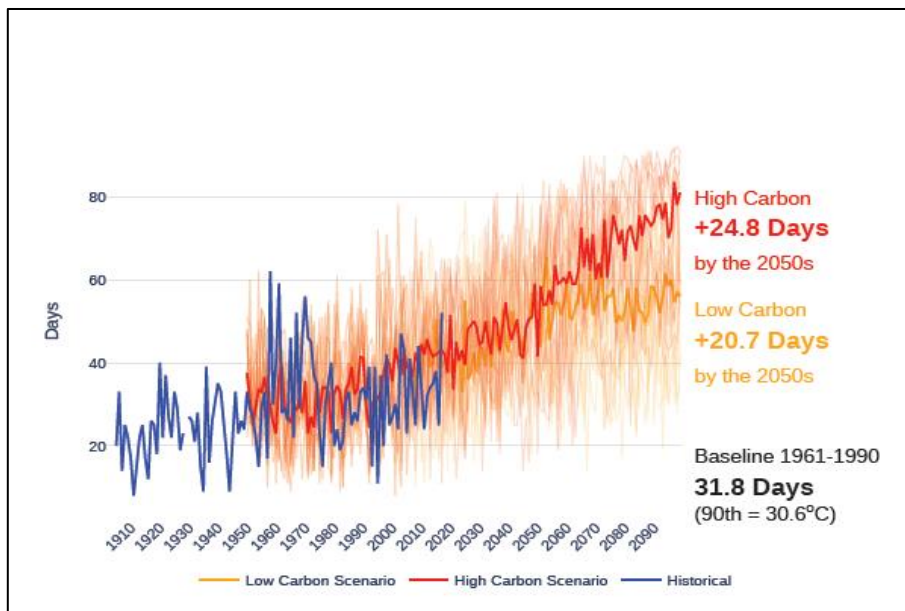


Figure A-9: Historical and projected number of summer days with maximum temperature over 90th percentile in the 1961-1990 period

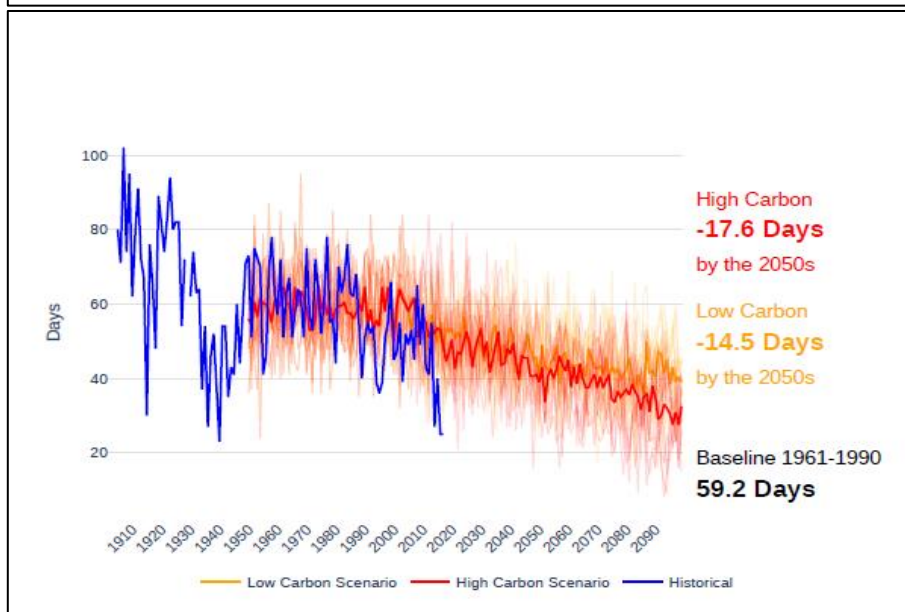


Figure A-10: Historical and projected annual number of daily freeze-thaw cycles

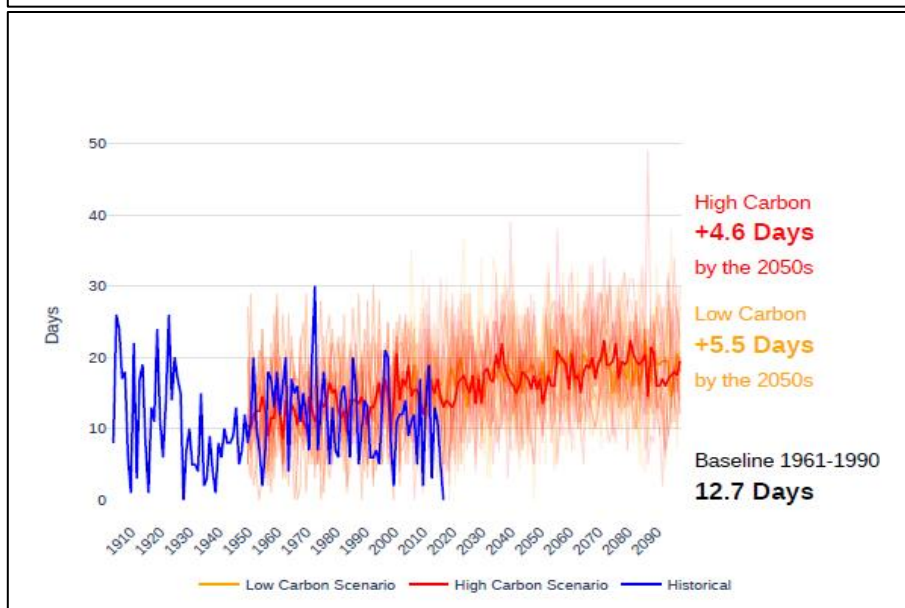


Figure A-11: Historical and projected number of daily freeze-thaw cycles in winter

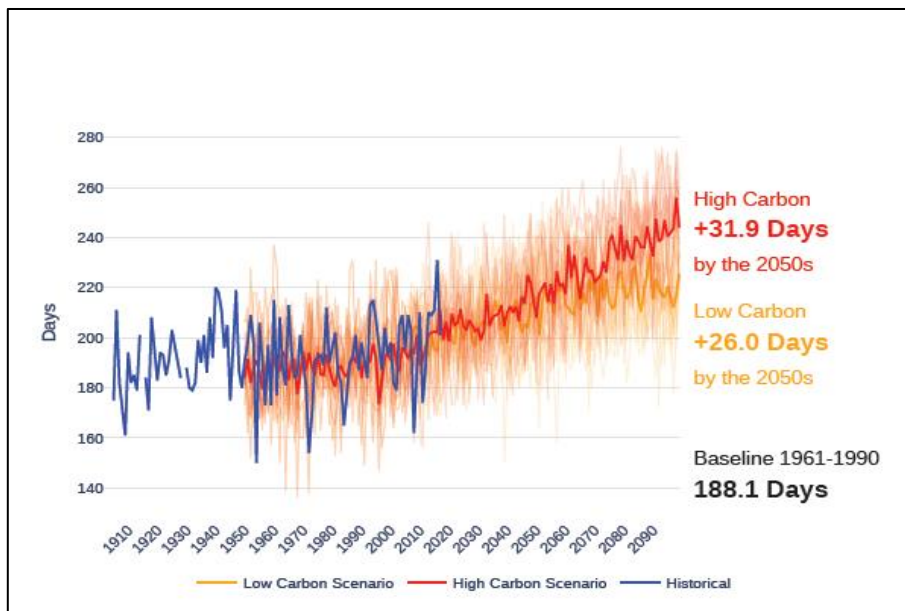


Figure A-12: Historical and projected growing season length

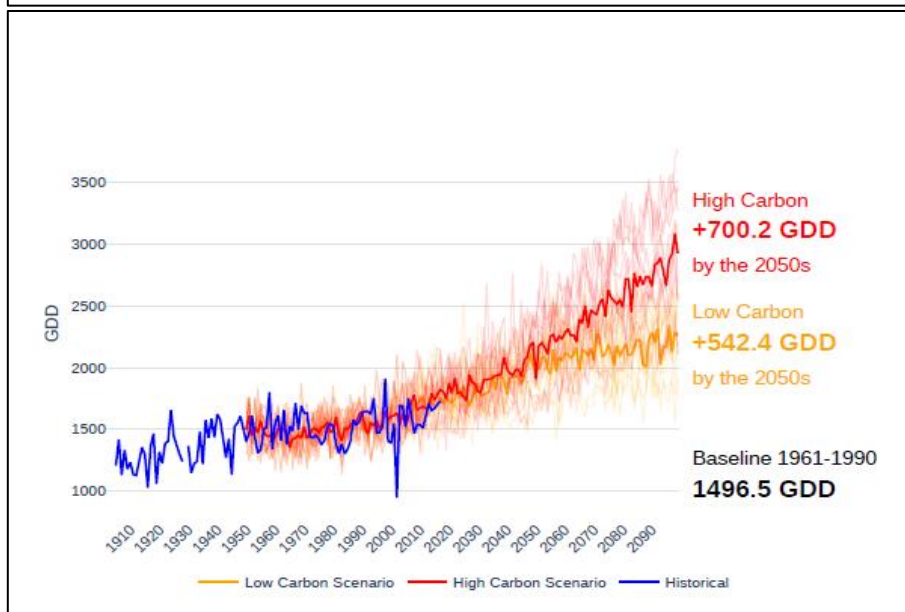


Figure A-13: Historical and projected growing degree days

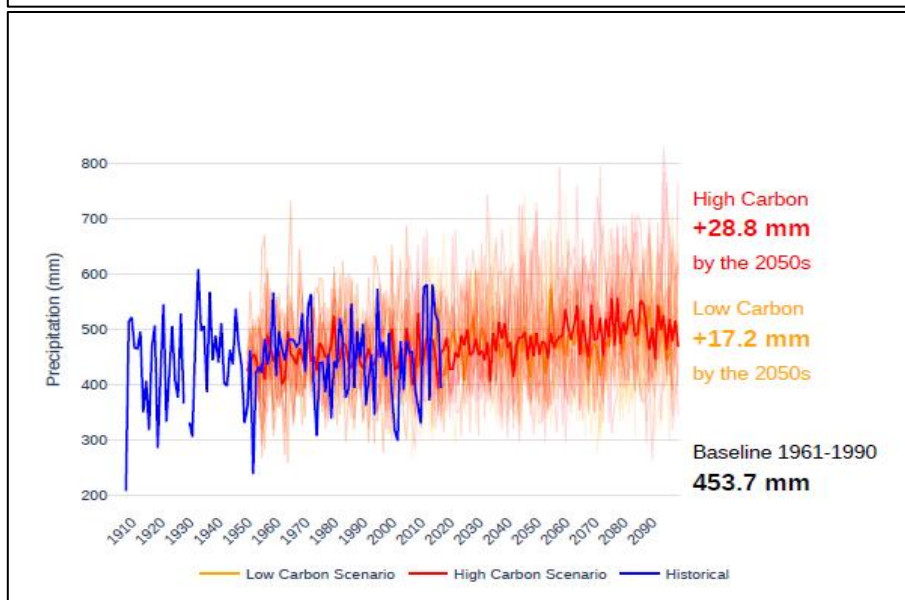


Figure A-14: Historical and projected total annual precipitation

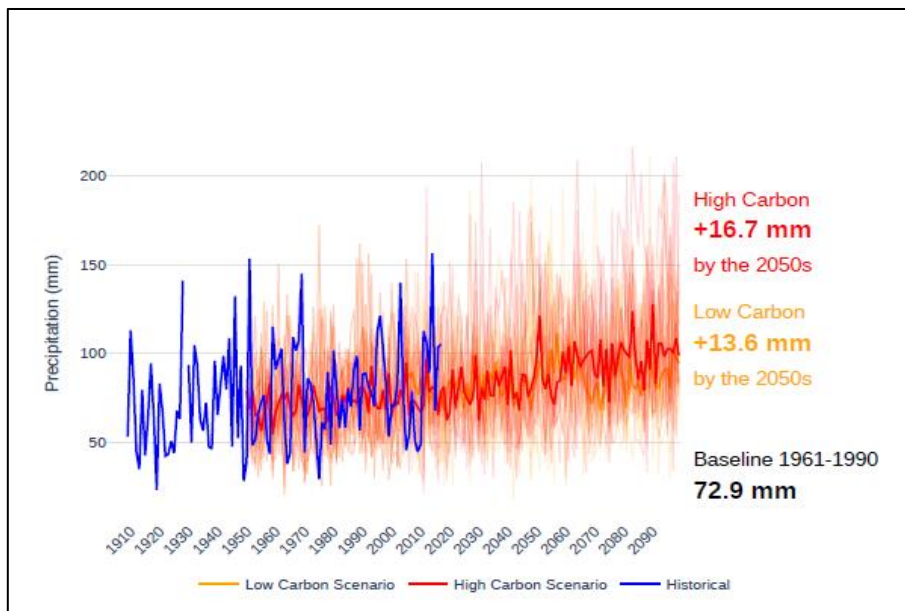


Figure A-15: Historical and projected total spring precipitation

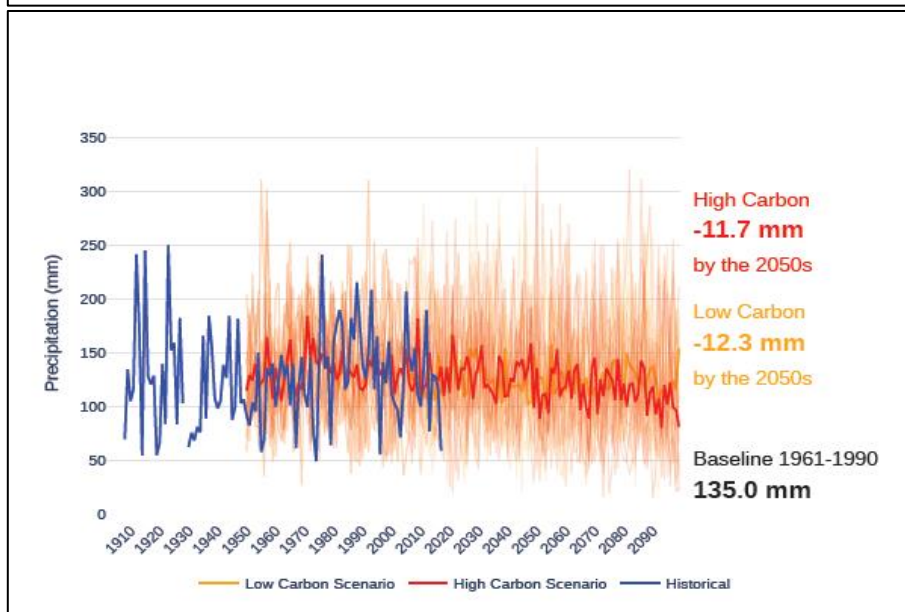


Figure A-16: Historical and projected total summer precipitation

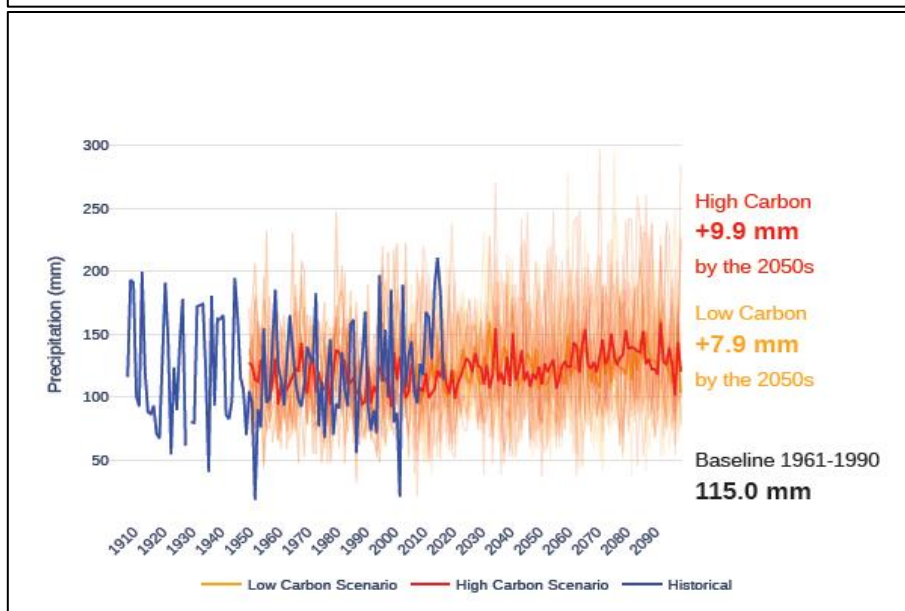


Figure A-17: Historical and projected total fall precipitation

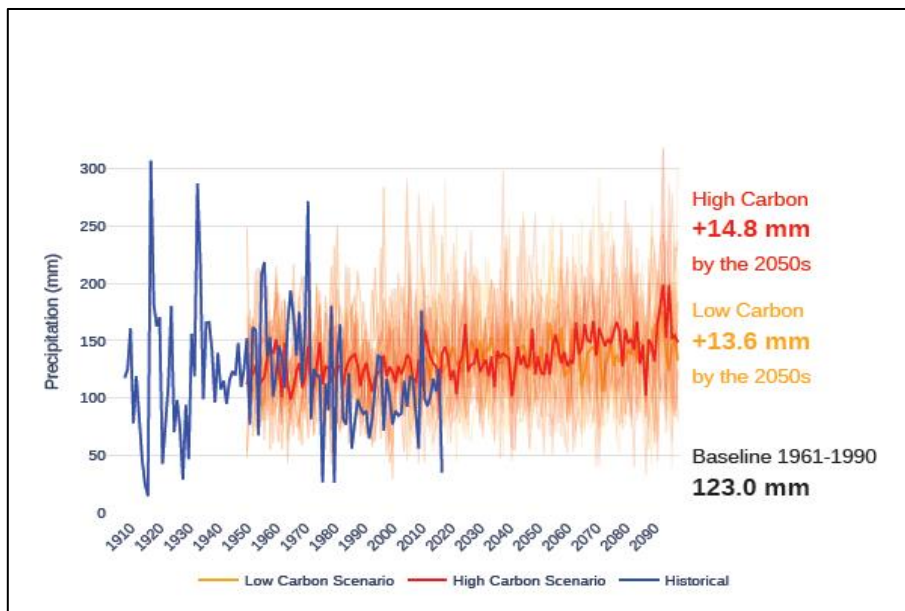


Figure A-18: Historical and projected total winter precipitation

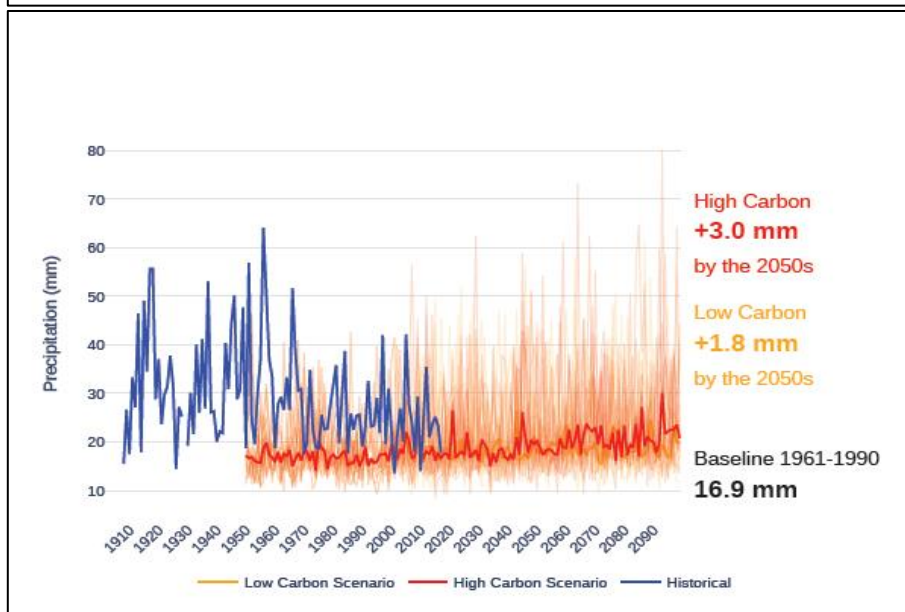


Figure A-19: Historical and projected maximum 1-day precipitation

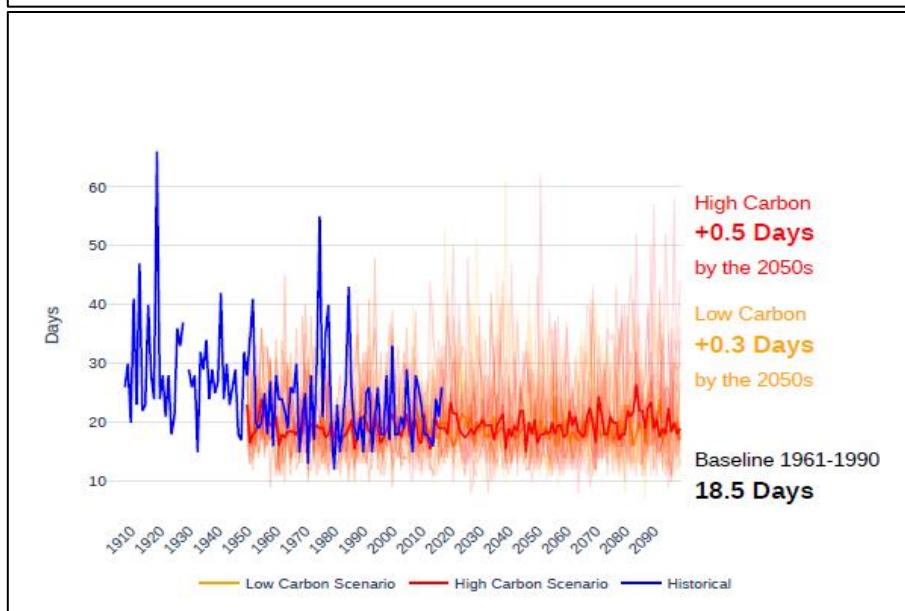


Figure A-20: Historical and projected maximum dry spell length

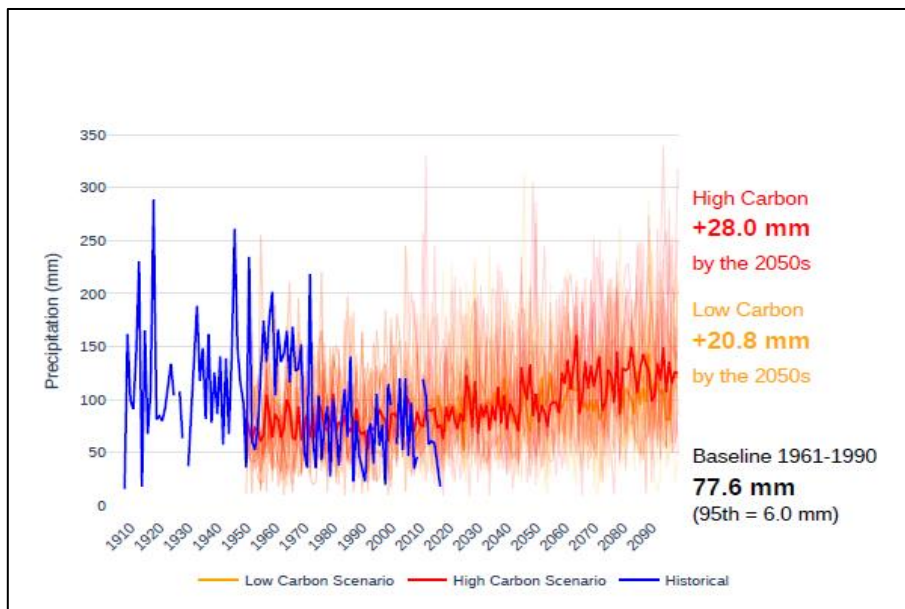


Figure A-21: Historical and projected annual precipitation above the 95th percentile in the 1961-1990 period

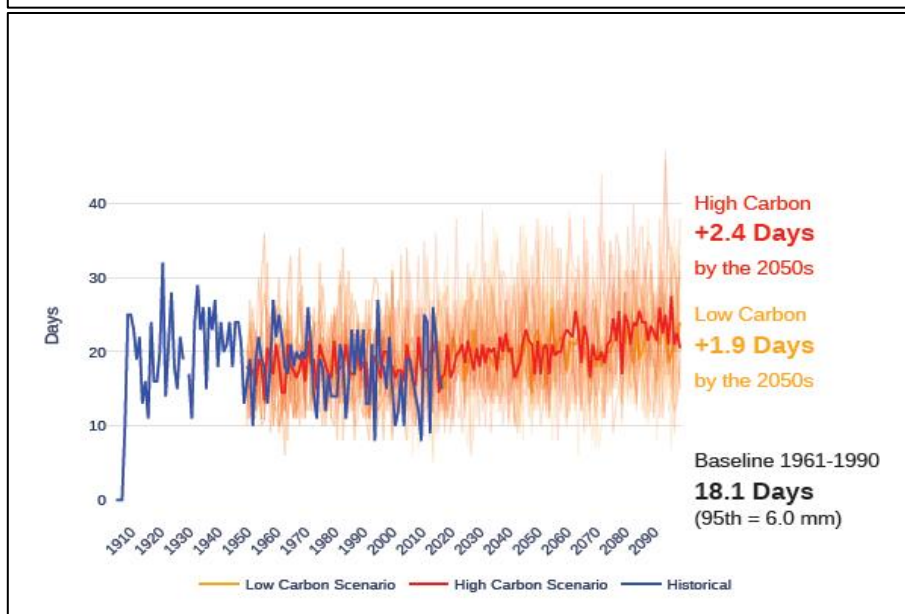


Figure A-22: Historical and projected number of days of precipitation above the 95th percentile in the 1961-1990 period